

FC ADAPTER



FC Square

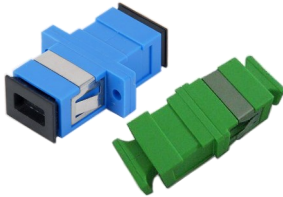


FC Round D-Type

DESCRIPTION

Optical Fiber Adapter is used to mate two connectors, usually mounted in a distribution panel or wall mount box. It is a precision components made from zirconia ceramic to ensure the perfect alignment of connectors and reduced insertion loss for both SM and MM fibers. In most cases, the split sleeve is the critical part of the system that aligns the ferrule part of the connector, keeping the fibers in perfect alignment.

SC ADAPTER



SC Simplex



SC Duplex

In the case of MT-RJ, the alignment is carried out by two guide pins fitted into one of the connectors. The adapter is purely to support and lock the connectors together in the distribution panel or wall box.

FEATURES

- Available in FC, SC, ST, LC, MU, MT-RJ and MPO
- Available in simplex, duplex, quad (LC) and Hybrid versions
- High precision zirconia or standard phosphor bronze sleeves
- Low insertion loss
- High repeatability and stability

MT-RJ & MPO ADAPTER



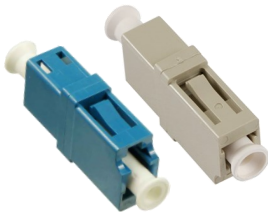
MT-RJ



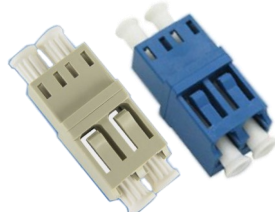
MPO



LC & MU ADAPTER



LC Simplex



LC Duplex



LC Duplex with SC



MU Adapter

ST & SMA ADAPTER



ST Adapter

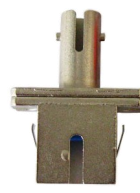


SMA Adapter

HYBRID ADAPTER



LC/SC



SC/ST



SC/FC



FC/ST

Note : Specifications are subject to change without notice

SPECIFICATIONS

Characteristic	Parameter
End face	PC/APC
Mode	Single Mode or Multi Mode
Sleeve Material	Zirconia Ceramic or Phosphor Bronze
Adapter Housing	Polymeric plastic tested in accordance to IEC60068-2-10 and in compliance with UL94 V-0 Rating Corrosive resistant nickel plated brass material for metal parts
Insert Loss	≤ 0.2 dB
Exchangeability	≤ 0.2 dB (connect randomly)
Tensile Strength	≤ 0.2 dB (0 ~ 100N)
Lifetime	>500 times mating (in accordance to IEC 61300-2) Adapter lifetime >15 years
Vibration	≤ 0.2 dB (5 ~ 50Hz, 1.5mm Amplitude)
Working Temperature	≤ 0.2 dB (-40 ~ 80C, 21 Cycles)

ORDERING INFORMATION

Example : FDP-SSC1

ADAPTER TYPE		TYPE*2		TYPE		MOUNTING	
FCP	FC/PC	S	SM (Dark Blue: PC/UPC; Green: APC)	S	Simplex	1	FC Square
FCA	FC/APC		M	MM (Beige: MM; Aqua: OM3)	D	Duplex (SC & LC only)	2
SCP	SC/PC	S		MM (Beige: MM; Aqua: OM3)	Q	Quad (LC only)	3
SCA	SC/APC		D		MM (Beige: MM; Aqua: OM3)	Q	Quad (LC only)
STP	ST/PC	M		MM (Beige: MM; Aqua: OM3)			
LCP	LC/PC		S		MM (Beige: MM; Aqua: OM3)	Q	Quad (LC only)
LCA	LC/APC	D		MM (Beige: MM; Aqua: OM3)			
LCA	LC/APC		M		MM (Beige: MM; Aqua: OM3)	Q	Quad (LC only)
SMP	SMA/PC	S		MM (Beige: MM; Aqua: OM3)			
E2P	E2000/PC*1		D		MM (Beige: MM; Aqua: OM3)	Q	Quad (LC only)
E2A	E2000/APC*1	M		MM (Beige: MM; Aqua: OM3)			
MUP	MU/PC		S		MM (Beige: MM; Aqua: OM3)	Q	Quad (LC only)
MPO	MPO/PC	D		MM (Beige: MM; Aqua: OM3)			
MT	MTRJ/PC		M		MM (Beige: MM; Aqua: OM3)	Q	Quad (LC only)
FCP-STP	FC/PC-ST/PC	S		MM (Beige: MM; Aqua: OM3)			
FCP-SCP	FC/PC-SC/PC		D		MM (Beige: MM; Aqua: OM3)	Q	Quad (LC only)
STP-SCP	ST/PC-SC/PC	M		MM (Beige: MM; Aqua: OM3)			
LCP-SCP	LC/PC-SC/PC		S		MM (Beige: MM; Aqua: OM3)	Q	Quad (LC only)
LCP-FCP	LC/PC-FC/PC	D		MM (Beige: MM; Aqua: OM3)			
E2A-SCA	E2000/APC- SC/APC		M		MM (Beige: MM; Aqua: OM3)	Q	Quad (LC only)

Note :

*1: E2000 connectors are from R&M

*2: Color is only applicable to polymeric material based connector's